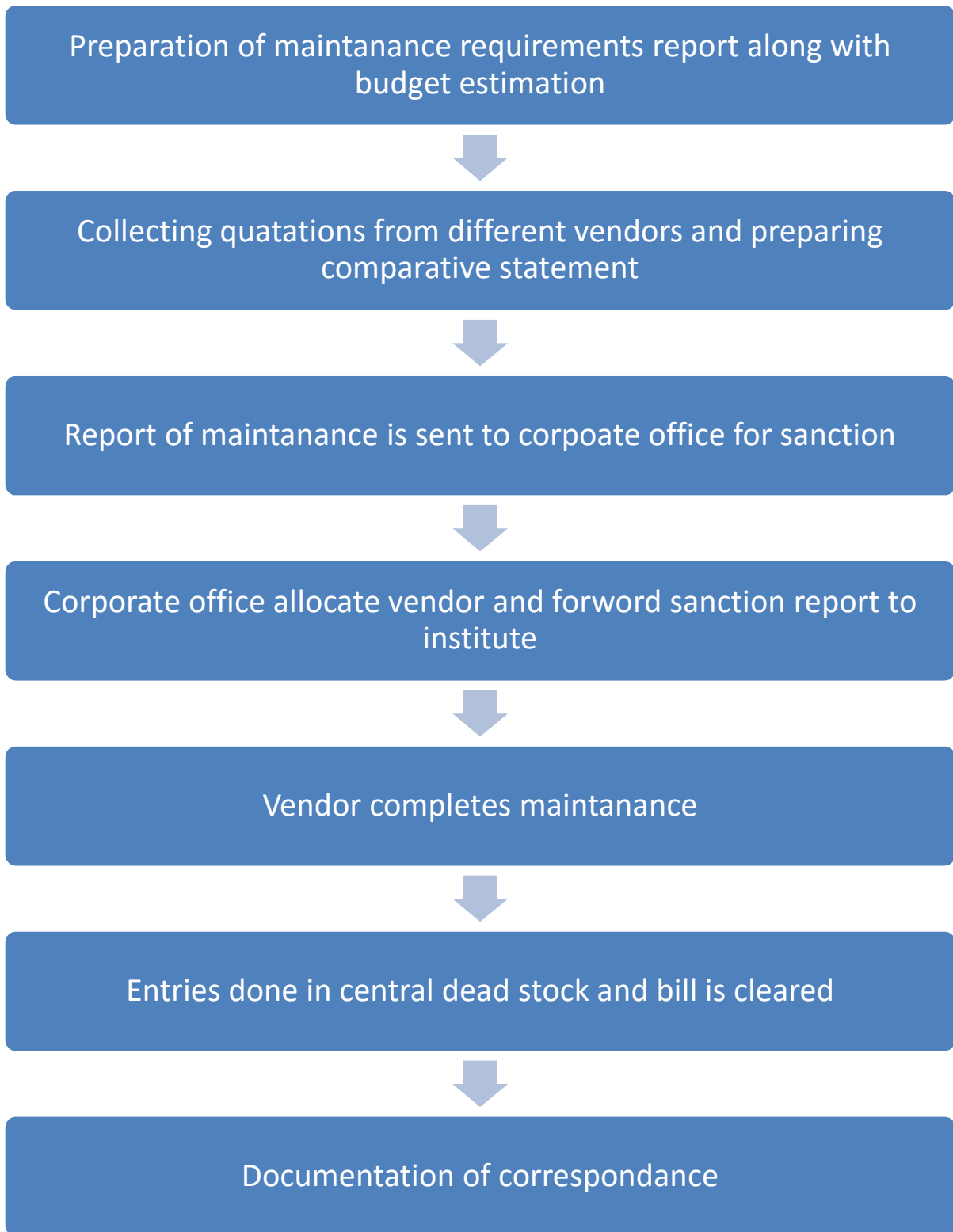


Procedure for maintaining and utilizing physical, academic and support facilities:





Jayawant Shikshan Prasarak Mandal's

JSPM Narhe Technical Campus

S. No. 12/2/2 and 14/9, Narhe, Tal : Haveli, Dist.: Pune - 411041

Phone : +91 20 2460 8700, 701, 702 Fax : +91 20 2460 8888 Web : www.jspmnarhe.in
Affiliated to University of Pune. Approved by AICTE New Delhi and DTE Maharashtra.



Prof. T. J. Sawant
D.E.E., B.E.(Electrical), MISTE
FOUNDER SECRETARY

Prof. Dr. A.B. Auti
ME(HP), Ph.D. (Engg.)
DIRECTOR

Date: 06/06/2017

INSTITUTE POLICIES

Physical Facility Policy

JSPM NTC adheres to the physical infrastructure as per AICTE norms.

JSPM NTC is committed to provide the physical facilities to all stakeholders like:

- Playground.
- Adequate washroom facility for men, women and disabled persons.
- Bank and ATM Centre.
- CCTV camera coverage of the whole campus.
- Proper lightning and ventilation in the campus
- Barrier free environment for disabled and elderly persons.
- Sufficient open space in campus.
- Sufficient parking space
- AC facility in the Central Library, VC room and Computing laboratories
- Water softening and UV/RO plant in the campus.
- Power backup facility for the campus.
- Medical Aids
- Clean and green campus.

Support Facility Policy

JSPM NTC adheres to the Support facility as per AICTE norms.

JSPM NTC is committed to provide the Support facilities to all stakeholders like:

- Transport
- General store
- Bank and ATM Centre
- Cafeteria
- Indoor/ Outdoor Game setup
- Girls/ Boys Common Room.
- Medical/ First Aid.
- Stakeholder counseling Centre.
- Fire safety measures.
- Secured Wi-Fi.

Maintenance Policy

JSPM NTC is committed to maintain clean, hygienic and up-to-date campus.

JSPM NTC supports overall maintenance of the campus facilities like:

- Regular cleaning, oiling and Greasing of Machineries.
- Repair, maintenance and replacement of spares required for machineries.
- Scheduled and periodic maintenance of electrical equipments.
- Scheduled and periodic maintenance of various equipments in the laboratories.
- Scheduled and periodic maintenance of transport vehicles like Buses and LMV's.
- Scheduled and periodic maintenance of UV/RO and softening of water plant.

Jayawant Shikshan Prasarak Mandal's

JSPM Narhe Technical Campus

S. No. 12/2/2 and 14/9, Narhe, Tal : Haveli, Dist.: Pune - 411041

Phone : +91 20 2460 8700, 701, 702 Fax : +91 20 2460 8888 Web : www.jspmnarhe.in

Affiliated to University of Pune. Approved by AICTE New Delhi and DTE Maharashtra.



Prof. T. J. Sawant

D.E.E., B.E.(Electrical), MISTE
FOUNDER SECRETARY

Prof. Dr. A.B. Auti
ME(HP), Ph.D. (Engg.)
DIRECTOR

- Scheduled and periodic internal and external painting
- 24X7 hours security facility to the campus.
- 24X7 maintenance of hygiene and safety in the campus.

Director
Director
JSPM Narhe Technical Campus
Narhe, Pune - 411 041